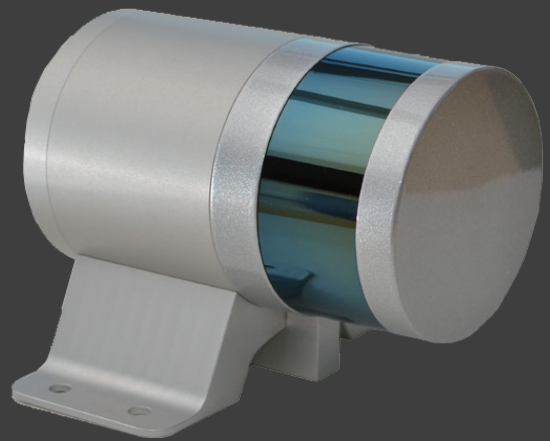


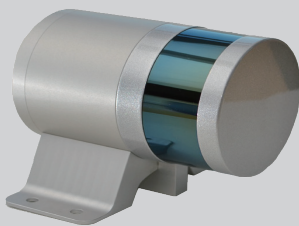
GEOMATE

GM-iLiDAR

LASER SENSOR



**MARINE SURVEY
& CONSTRUCTION**

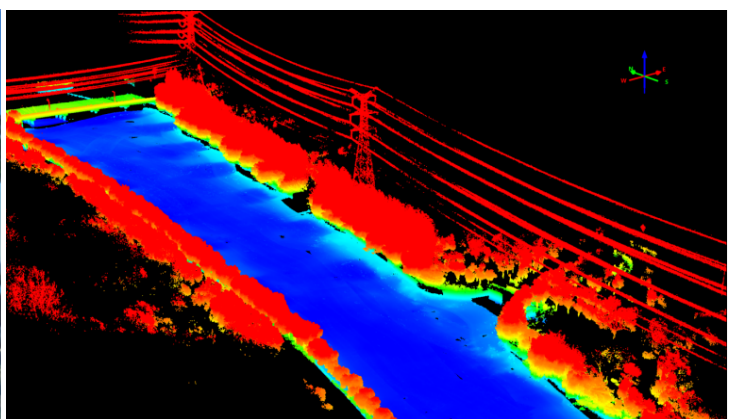


The iLiDAR can be mounted on Model 6 USV or manned ship, with multi-beam sonar to complete the integration of water and underwater to provide water point cloud data collection, share position and attitude data with multi-beams, and be compatible with mainstream multi-beam data acquisition and post-processing software on the market. The Lidar reserves the AUX interface, which only needs one cable to access all the data above the water, which is convenient and quick to install. With time synchronization technology, the above-water and underwater point cloud data are seamlessly compatible, and the integration is worry-free!

SPECIFICATIONS

INFRARED LASER MODULE	1-20Hz-TIME OF FLIGHT MEASUREMENTS WITH DUAL RETURNS
FRAME RATE	5-20Hz (10Hz DEFAULT)
WAVE LENGTH PEAK	905nm (TYPICALLY) CLASS 1 EYE SAFE
OUTPUT	UP TO 300.000 POINTS PER SEC
ANGULAR RESOLUTION	0.1°-0.4°VERTICAL
ANGULAR RESOLUTION	2° BETWEEN EVERY OF THE 16 LASER/HORIZONTAL
RANGE	100m
DATA I/O	NORBIT PROPIETARY SYNCHRONIZED TIME STAMPED
FIELD OF VIEW	30°VER, 360°HOR
POWER	8W (TYPICAL)
VOLTAGE	10-29VDC or 110/220VAC (POWERED DIRECTLY BY THE SIU)
ACCURACY	2cm
DIMENSIONS (DIA. x H x L)	103mm x 130mm x 150mm
WEIGHT	2.4kg

APPLICATION



GEOMATE
Premium Surveying. Trusted Solutions

MADE IN
SINGAPORE

Geomate Positioning Pte. Ltd.

71 Lorong 23 Geylang #07-09
Work + Store (71G) Singapore 388386
+65 9130 7218
sales@geomate.sg
www.geomate.sg