

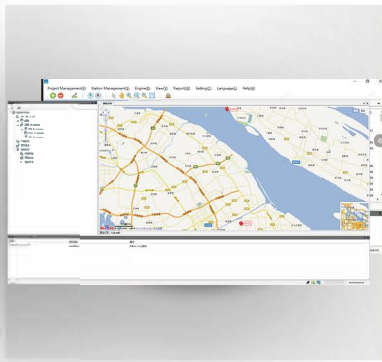
GEOMATE

Premium Surveying. Trusted Solutions



GMMonitor

GNSS monitoring system



GMMonitor

GMMonitor is the core of the GNSS monitoring system. It's served for 24h continuous object monitoring to manage shift with various functions like, equipment management, data security communication, deformation data calculation etc.

SPECIFICATIONS

System Recommendations

Operation System	Windows Server 2009/2012/2016 (64-bit)
Runtime library	.Net Framework 4.0 runtime
Database	SQL Server 2008 or higher version

Hardware

Processor	Eight-cores
RAM	16GB
Hard disk	According to users' storage duration setting

Capacity

Filter Method	Median filtering Weighted average filtering Kalman filtering
---------------	--

Processing engine	<ul style="list-style-type: none"> • Post processing engine • Realtime kinematic engine • PPP engine for marine monitoring • IGS long baseline engine for crustal changes and base station stability analysis
-------------------	---

Features	<ul style="list-style-type: none"> • Real time receiving GNSS data and Storage. • GNSS+MEMS solution supports real-time,different time span post processing and different constellations post processing. • Support serial port, TCP/IP, NTRIP, MQTT etc. protocols. • Support self-defined coordinates system. • Support RINEX 2.10/3.02 /3.04 storage. • Support data quality check. • Support reference stations stability check. • Support TCP/UDP/HTTP/MQTT database result output.
----------	--